



# The Aldbury

4 bedroom detached home

Whitsbury Green | Whitsbury Road | Fordingbridge | SP6 1NQ



# The Aldbury

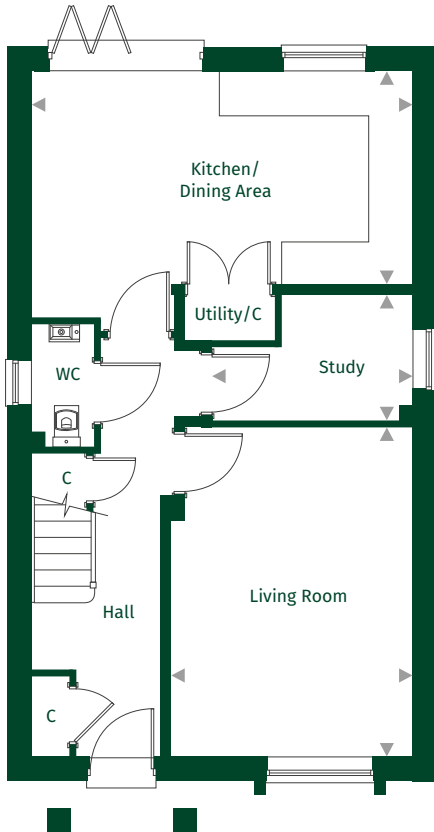
Standard Layout Plots: 45 | 63

Handed Plot: 62

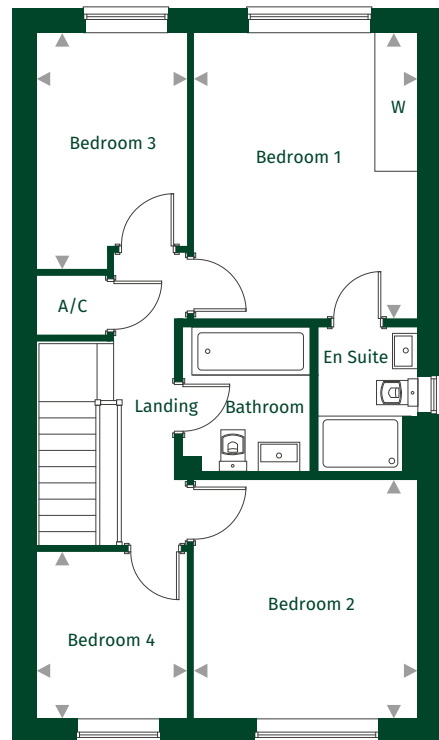
 x4  x2



Ground Floor



First Floor



Kitchen/Dining Area	5.50m x 3.54m	18'1" x 11'8"
Living Room	4.75m x 3.52m	15'7" x 11'7"
Study	2.91m x 1.81m	9'6" x 5'11"

Bedroom 1	4.12m x 3.23m	13'7" x 10'8"
Bedroom 2	3.45m x 3.23m	11'4" x 10'8"
Bedroom 3	3.07m x 2.17m	10'1" x 7'1"
Bedroom 4	2.40m x 2.17m	7'11" x 7'1"

**Key:**

◀ ▶ Maximum dimension C = Cupboard W = Wardrobe A/C = Airing Cupboard

For full details please contact our Sales Team:

Call: 01425 541818 | Email: [whitsburygreen@pennyfarthinghomes.co.uk](mailto:whitsburygreen@pennyfarthinghomes.co.uk) | Website: [pennyfarthinghomes.co.uk](http://pennyfarthinghomes.co.uk)

Floorplans and CGIs are indicative only. The floor plans illustrate a typical layout of this house type. For exact plot specification, details of external and internal finishes, dimensions and floor plan differences please speak to a Sales Adviser. Correct at time of going to print, November 2023.