



DANES PARK

The Setwood & Setleigh

A choice of end terrace, mid terrace and semi-detached 2 bedroom houses



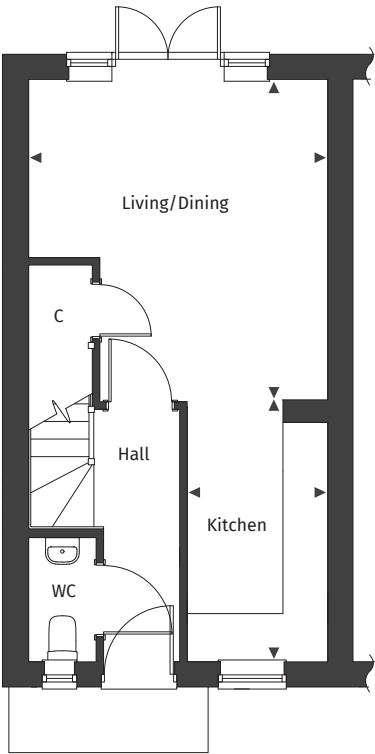
[Floor plans and dimensions >](#)

The Setwood & Setleigh

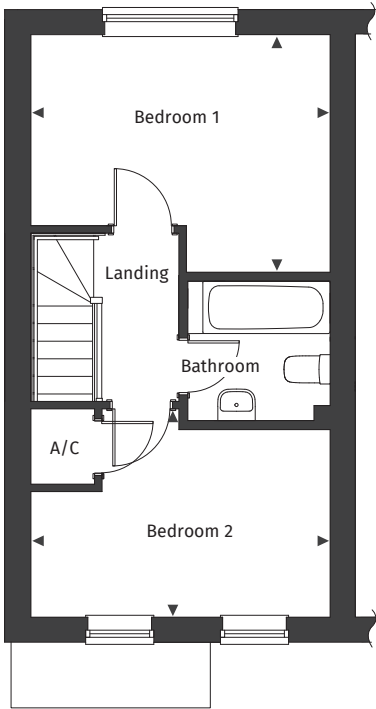
Floor plans and computer generated images are indicative only.



Ground floor



First floor



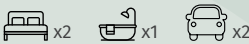
Floor plans are not to scale.

Plot numbers 18, 19, 20*, 49, 50*, 83, 84*, 85*, 86, 87*, 119*, 120, 121

See separate site plan for plot locations.

Plans shown for plot 18. Please speak to our Sales Advisor for plot specific information as details vary per plot including window sizes, window positions, garage and car port arrangements, and external finishes.

* Handed plots.



Dimensions

Kitchen	1.87m x 3.50m	6' 1" x 11' 5"	Bedroom 1	3.99m x 3.17m	13' 1" x 10' 5"
Living/Dining	3.99m x 4.28m	13' 1" x 14' 0"	Bedroom 2	3.99m x 2.82m	13' 1" x 9' 3"

◀ ▶ Maximum dimension A/C Airing Cupboard C Cupboard

For full details please contact our Sales Team:

Call: 01425 563 223 | **Email:** danepark@pennyfarthinghomes.co.uk | **Website:** pennyfarthinghomes.co.uk

Floor plans and CGIs are indicative only, illustrating a typical house type rather than a specific plot. Actual homes may differ in layout, orientation, topography, landscaping, neighbouring structures, finishes, dimensions, and other site-specific factors. For precise details on external and internal specifications, elevations, and as-built information, please consult a Sales Advisor. Correct at time of publication August 2025.