



OAKWOOD
GROVE

The Cherry

3 bedroom bungalow with garage



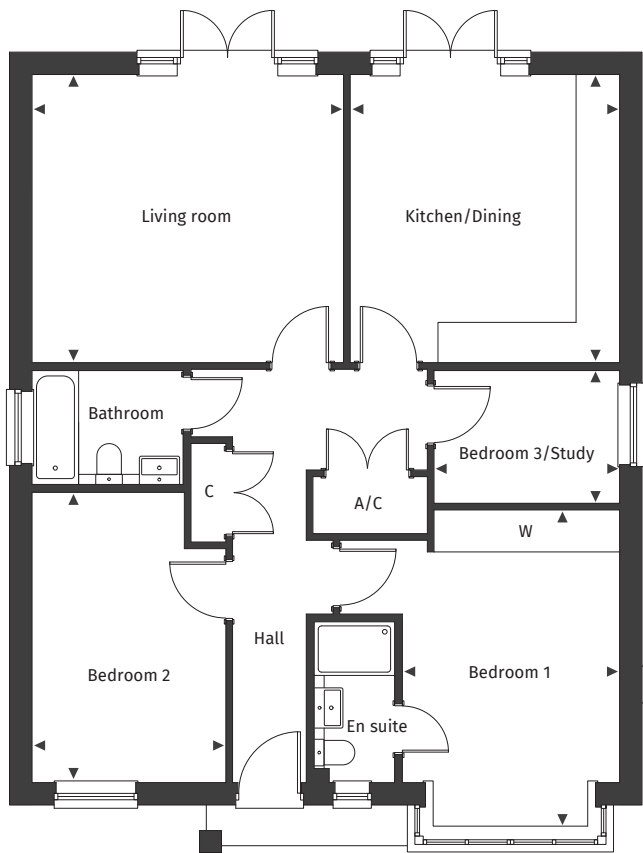
Computer Generated Image.



[Floor plans and dimensions >](#)

The Cherry

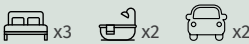
Floor plans and computer generated images are indicative only.



Plot numbers 18, 20 & 21

See separate site plan for plot location.

Plans shown for plots 20 & 21. Plot 18 is handed.



Dimensions

Kitchen/Dining	4.02m x 4.30m	13' 2" x 14' 1"	Bedroom 2	2.89m x 4.35m	9' 5" x 14' 3"
Living room	4.65m x 4.30m	15' 3" x 14' 1"	Bedroom 3/Study	2.77m x 1.98m	9' 1" x 6' 6"
Bedroom 1	3.24m x 4.74m	10' 6" x 15' 6"			

◀ ▶ Maximum dimension A/C Airing Cupboard C Cupboard W Wardrobe

For full details please contact our Sales Team:

Call: 01425 563 223 | Email: oakwoodgrove@pennyfarthinghomes.co.uk | Website: pennyfarthinghomes.co.uk