



DANES PARK

# The Deerwood

Two bedroom semi-detached house



Computer Generated Image.



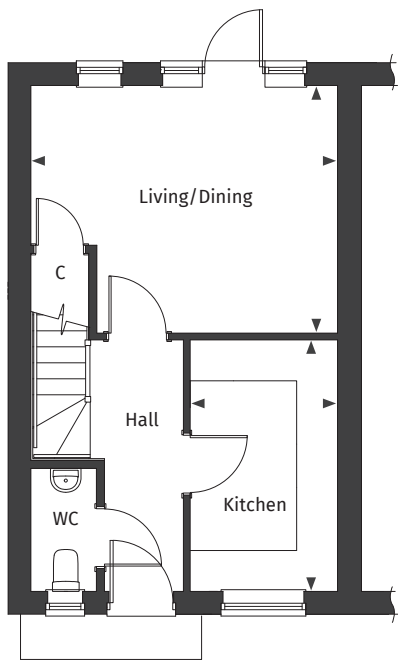
[Floor plans and dimensions >](#)

# The Deerwood

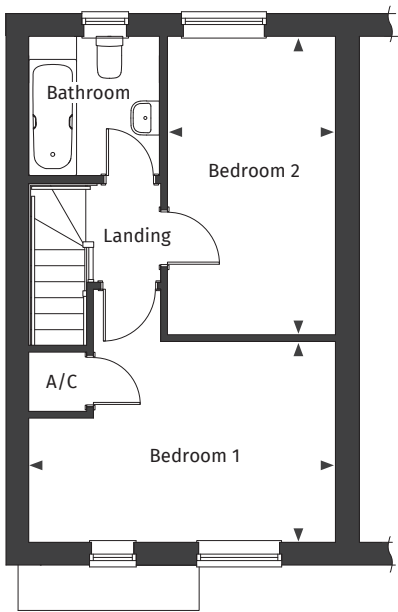
Floor plans and computer generated images are indicative only.



Ground floor



First floor



Floor plans are not to scale.

**Plot numbers** 28, 29\*, 155 & 156\*

See separate site plan for plot locations.

\* Handed plots.



## Dimensions

Kitchen	2.16m x 3.69m	7' 1" x 12' 1"	Bedroom 1	4.50m x 2.95m	14' 9" x 9' 8"
Living/Dining	4.50m x 3.63m	14' 9" x 11' 11"	Bedroom 2	2.46m x 4.38m	8' 1" x 14' 5"

◀ ▶ Maximum dimension    A/C Airing Cupboard    C Cupboard

**For full details please contact our Sales Team:**

**Call:** 01425 563 223 | **Email:** [danepark@pennyfarthinghomes.co.uk](mailto:danepark@pennyfarthinghomes.co.uk) | **Website:** [pennyfarthinghomes.co.uk](http://pennyfarthinghomes.co.uk)

Floor plans and CGIs are indicative only, illustrating a typical house type rather than a specific plot. Actual homes may differ in layout, orientation, topography, landscaping, neighbouring structures, finishes, dimensions, and other site-specific factors. For precise details on external and internal specifications, elevations, and as-built information, please consult a Sales Advisor. Correct at time of publication August 2025.