



DANES PARK

The Stoneywood

Four bedroom end terrace house with garage



Computer Generated Image



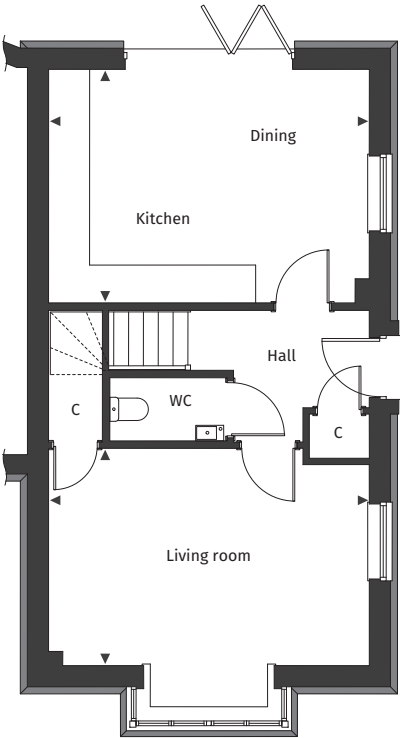
[Floor plans and dimensions >](#)

The Stonewood

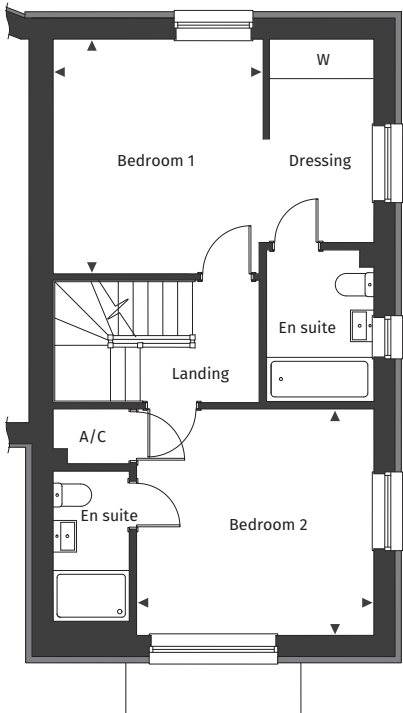
Floor plans and computer generated images are indicative only.



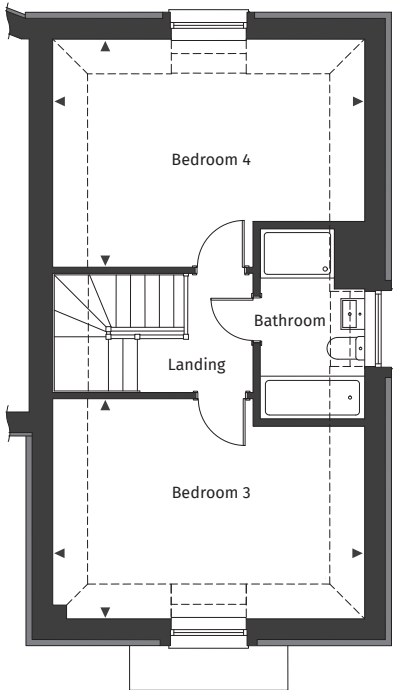
Ground floor



First floor



Second floor



Floor plans are not to scale.

Plot number 5

See separate site plan for plot location.



Ground floor

Kitchen/Dining
5.08m x 3.70m 16' 8" x 12' 1"

Living room
5.08m x 3.44m 16' 8" x 11' 3"

First floor

Bedroom 1
3.32m x 3.71m 10' 10" x 12' 2"

Bedroom 2
3.75m x 3.60m 12' 4" x 11' 9"

Second floor

Bedroom 3
5.07m x 3.58m 16' 7" x 11' 9"

Bedroom 4
5.07m x 3.71m 16' 7" x 12' 2"

◀ ▶ Maximum dimension A/C Airing Cupboard C Cupboard W Wardrobe --- Reduced ceiling height

For full details please contact our Sales Team:

Call: 07394 564073 | **Email:** danespark@pennyfarthinghomes.co.uk | **Website:** pennyfarthinghomes.co.uk

The Computer Generated Image depicted here is an artistic representation of plots 5 Danes Park. Actual building plots may vary in terms of orientation, topography, landscaping, neighbouring structures, and other site-specific factors. Buyers should refer to detailed site plans, elevations, and architectural specifications for accurate information regarding individual plots and as built. Version 2. Correct at time of publication, November 2025.