



DANES PARK

The Everleigh

Four bedroom mid terrace house with carport



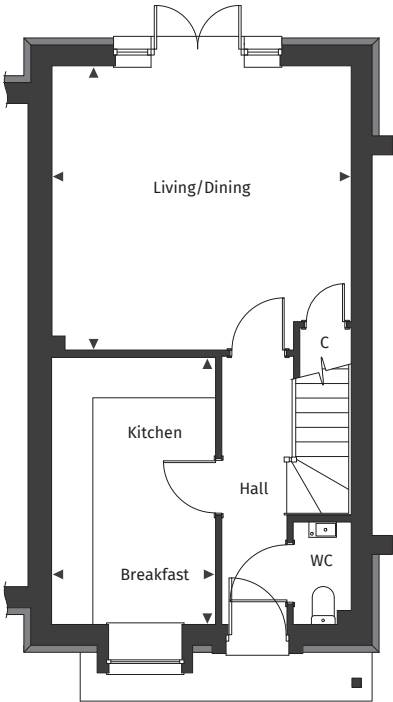
[Floor plans and dimensions >](#)

The Everleigh

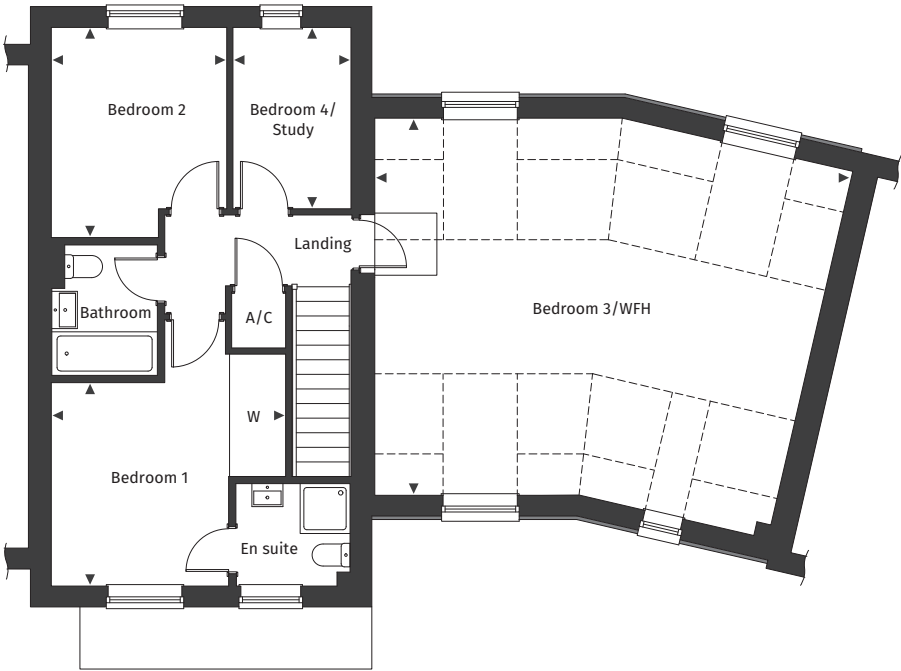
Floor plans and computer generated images are indicative only.



Ground floor



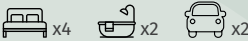
First floor



Floor plans are not to scale.

Plot number 32

See separate site plan for plot location.



Dimensions

Kitchen/Breakfast	2.65m x 4.30m	8' 8" x 14' 1"	Bedroom 1	3.77m x 3.27m	12' 4" x 10' 8"
Living/Dining	4.53m x 3.98m	14' 10" x 13' 0"	Bedroom 2	2.82m x 3.38m	9' 3" x 11' 1"
			Bedroom 3/WFH	7.24m x 6.07m	23' 9" x 19' 11"
			Bedroom 4/Study	1.90m x 2.92m	6' 2" x 9' 7"

◀ ▶ Maximum dimension A/C Airing Cupboard C Cupboard W Wardrobe WFH Work from home space --- Reduced ceiling height

For full details please contact our Sales Team:
Call: 07394 564073 | **Email:** danespark@pennyfarthinghomes.co.uk | **Website:** pennyfarthinghomes.co.uk

The Computer Generated Image depicted here is an artistic representation of plot 32 Danes Park. Actual building plots may vary in terms of orientation, topography, landscaping, neighbouring structures, and other site-specific factors. Buyers should refer to detailed site plans, elevations, and architectural specifications for accurate information regarding individual plots and as built.
Version 1. Correct at time of publication, October 2025.