



DANES PARK

The Harleigh

Two bedroom mid terrace house with parking



DRAFT

Computer Generated Image.



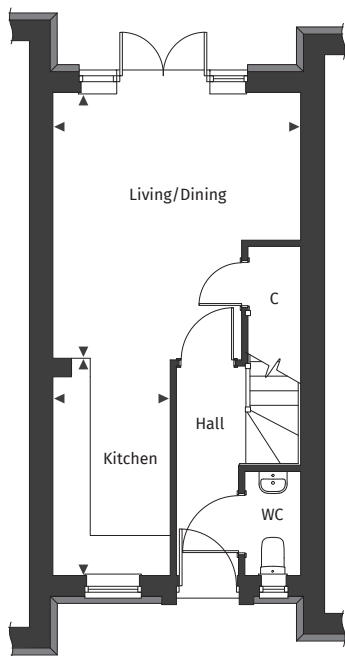
[Floor plans and dimensions >](#)

The Harleigh

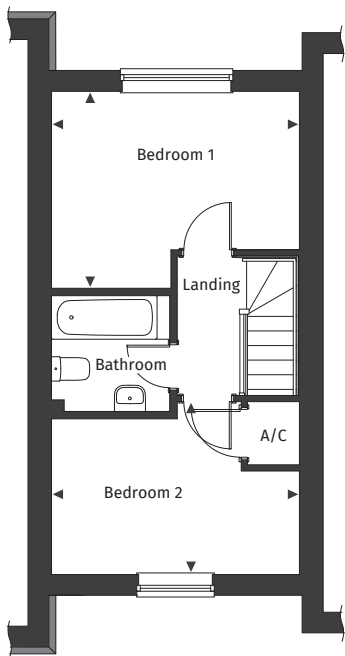
Floor plans and computer generated images are indicative only.



Ground floor



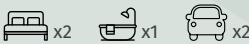
First floor



Floor plans are not to scale.

Plot number 31, 161

See separate site plan for plot location.



Dimensions

Kitchen	1.87m x 3.50m	6' 1" x 11' 5"	Bedroom 1	3.99m x 3.17m	13' 1" x 10' 5"
Living/Dining	3.99m x 4.28m	13' 1" x 14' 0"	Bedroom 2	3.99m x 2.82m	13' 1" x 9' 3"

◀ ▶ Maximum dimension A/C Airing Cupboard C Cupboard

For full details please contact our Sales Team:

Call: 07394 564073 | **Email:** danespark@pennyfarthinghomes.co.uk | **Website:** pennyfarthinghomes.co.uk

The Computer Generated Image depicted here is an artistic representation of plot 31 Danes Park. Actual building plots may vary in terms of orientation, topography, landscaping, neighbouring structures, and other site-specific factors. Buyers should refer to detailed site plans, elevations, and architectural specifications for accurate information regarding individual plots and as built. Version 1. Correct at time of publication, October 2025.