



DANES PARK

The Harleigh

Two bedroom mid terrace house with parking



Computer Generated Image.



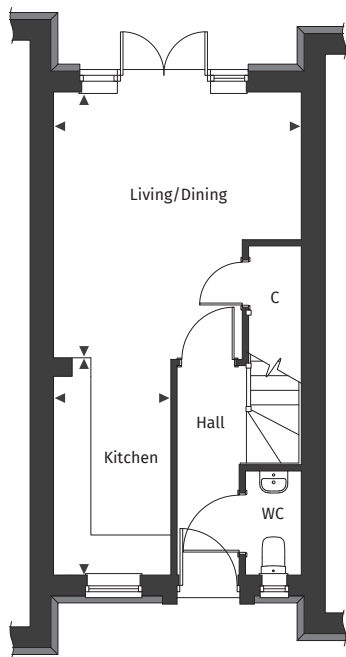
[Floor plans and dimensions >](#)

The Harleigh

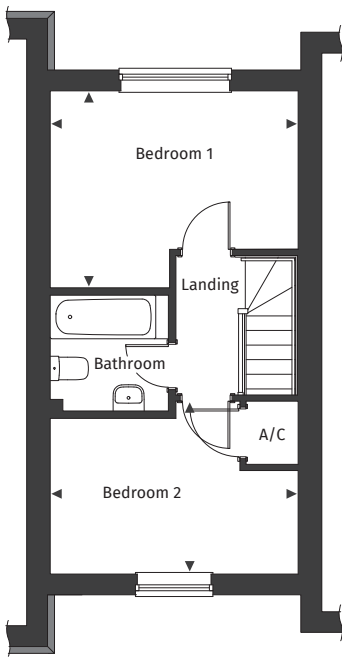
Floor plans and computer generated images are indicative only.



Ground floor



First floor



Floor plans are not to scale.

Plot number 31, 161

See separate site plan for plot location.



Dimensions

| | | | | | |
|---------------|---------------|-----------------|-----------|---------------|-----------------|
| Kitchen | 1.87m x 3.50m | 6' 1" x 11' 5" | Bedroom 1 | 3.99m x 3.17m | 13' 1" x 10' 5" |
| Living/Dining | 3.99m x 4.28m | 13' 1" x 14' 0" | Bedroom 2 | 3.99m x 2.82m | 13' 1" x 9' 3" |

◀ ▶ Maximum dimension A/C Airing Cupboard C Cupboard

For full details please contact our Sales Team:

Call: 07394 564073 | **Email:** danespark@pennyfarthinghomes.co.uk | **Website:** pennyfarthinghomes.co.uk

The Computer Generated Image depicted here is an artistic representation of plot 31 Danes Park. Actual building plots may vary in terms of orientation, topography, landscaping, neighbouring structures, and other site-specific factors. Buyers should refer to detailed site plans, elevations, and architectural specifications for accurate information regarding individual plots and as built. Version 2. Correct at time of publication, November 2025.