



DANES PARK

The Rushbury

Four bedroom detached house with garage



DRAFT

Computer Generated Image.



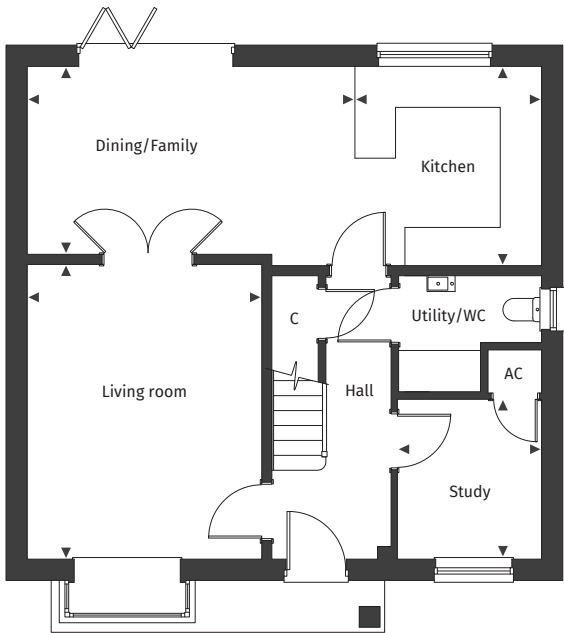
[Floor plans and dimensions >](#)

The Rushbury

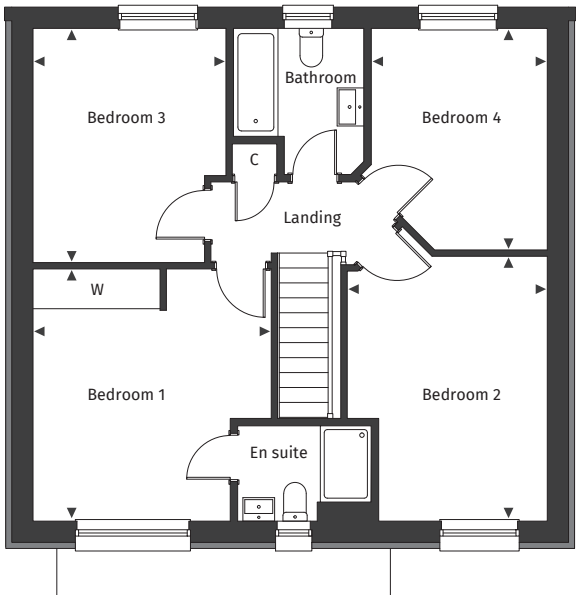
Floor plans and computer generated images are indicative only.



Ground floor



First floor



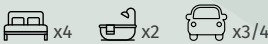
Floor plans are not to scale.

Plot numbers 1*, 45*, 51, 56, 57*, 59*, 61, 91, 102, 123, 127, 152, 163*

See separate site plan for plot locations.

Plans shown for plot 51. Please speak to our Sales Advisor for plot specific information as details vary per plot including window sizes, window positions, garage and car port arrangements, and external finishes.

* Handed plots.



Dimensions

Kitchen	2.88m x 3.13m	9' 6" x 10' 3"	Bedroom 1	3.75m x 3.97m	12' 4" x 13' 0"
Dining/Family	5.20m x 2.95m	17' 1" x 9' 8"	Bedroom 2	3.15m x 4.16m	10' 4" x 13' 8"
Living room	3.69m x 4.63m	12' 1" x 15' 2"	Bedroom 3	3.03m x 3.68m	10' 0" x 12' 1"
Study	2.30m x 2.30m	7' 6" x 7' 6"	Bedroom 4	2.77m x 3.50m	9' 1" x 11' 6"

◀ ▶ Maximum dimension A/C Airing Cupboard C Cupboard W Wardrobe

For full details please contact our Sales Team:

Call: 07394 564073 | **Email:** danepark@pennyfarthinghomes.co.uk | **Website:** pennyfarthinghomes.co.uk

The Computer Generated Image depicted here is an artistic representation of plot 51 Danes Park. Actual building plots may vary in terms of orientation, topography, landscaping, neighbouring structures, and other site-specific factors. Buyers should refer to detailed site plans, elevations, and architectural specifications for accurate information regarding individual plots and as built.
Version 1. Correct at time of publication, October 2025.