



DANES PARK

The Harwood

Two bedroom semi-detached house
with carport/parking



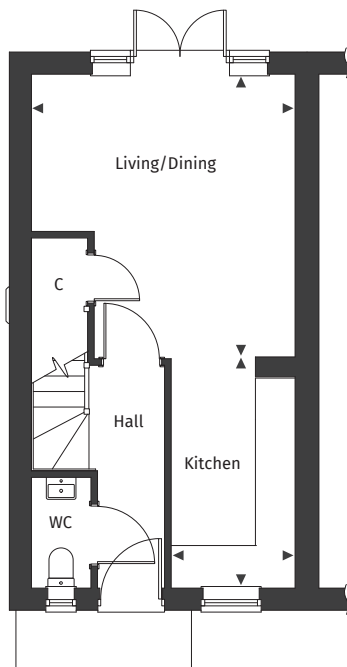
[Floor plans and dimensions >](#)

The Harwood

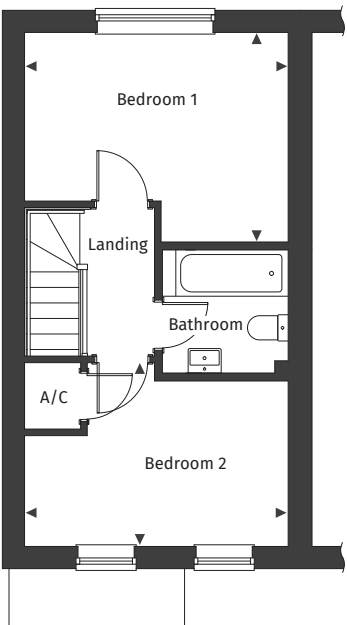
Floor plans and computer generated images are indicative only.



Ground floor



First floor



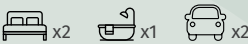
Floor plans are not to scale.

Plot numbers 64, 65*

See separate site plan for plot locations.

Plans shown for plot 64. Please speak to our Sales Advisor for plot specific information as details vary per plot including window sizes, window positions, garage and car port arrangements, and external finishes.

* Handed plots.



Dimensions

Kitchen	1.87m x 3.50m	6' 1" x 11' 5"	Bedroom 1	3.99m x 3.17m	13' 1" x 10' 5"
Living/Dining	3.99m x 4.28m	13' 1" x 14' 0"	Bedroom 2	3.99m x 2.82m	13' 1" x 9' 3"

◀ ▶ Maximum dimension A/C Airing Cupboard C Cupboard

For full details please contact our Sales Team:

Call: 07394 564073 | **Email:** danespark@pennyfarthinghomes.co.uk | **Website:** pennyfarthinghomes.co.uk

The Computer Generated Image depicted here is an artistic representation of plots 64 - 65 Danes Park. Actual building plots may vary in terms of orientation, topography, landscaping, neighbouring structures, and other site-specific factors. Buyers should refer to detailed site plans, elevations, and architectural specifications for accurate information regarding individual plots and as built.

Version 1. Correct at time of publication, October 2025.