



DANES PARK

The Ashleigh

Three bedroom mid terrace house with carport



Computer Generated Image.



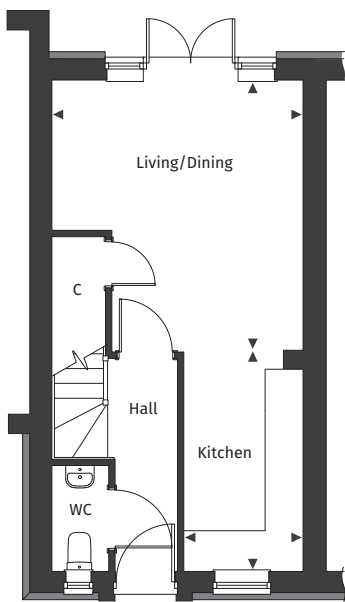
[Floor plans and dimensions >](#)

The Ashleigh

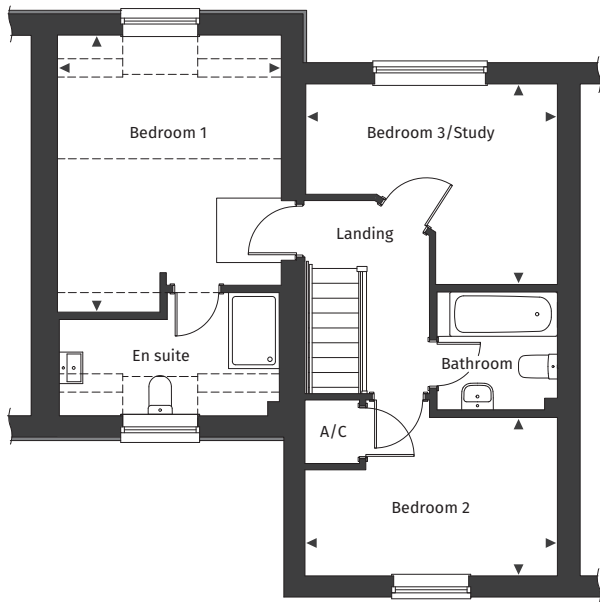
Floor plans and computer generated images are indicative only.



Ground floor



First floor



Floor plans are not to scale.

Plot number 160

See separate site plan for plot location.



Ground floor

Kitchen	1.87m x 3.50m	6' 1" x 11' 5"
Living/Dining	3.99m x 4.28m	13' 1" x 14' 0"

First floor

Bedroom 1	3.54m x 4.40m	11' 7" x 14' 5"
Bedroom 2	3.99m x 2.82m	13' 1" x 9' 3"
Bedroom 3/Study	3.97m x 3.17m	13' 0" x 10' 4"

◀ ▶ Maximum dimension A/C Airing Cupboard C Cupboard --- Reduced ceiling height

For full details please contact our Sales Team:

Call: 07394 564073 | **Email:** danespark@pennyfarthinghomes.co.uk | **Website:** pennyfarthinghomes.co.uk

The Computer Generated Image depicted here is an artistic representation of plot 160 Danes Park. Actual building plots may vary in terms of orientation, topography, landscaping, neighbouring structures, and other site-specific factors. Buyers should refer to detailed site plans, elevations, and architectural specifications for accurate information regarding individual plots and as built. Version 2. Correct at time of publication, November 2025.